

# A UNIVERSITY IN A GREAT CITY A CITY IN A GREAT UNIVERSITY



**SMU**

SINGAPORE MANAGEMENT  
UNIVERSITY

International  
Prospectus 2023

# HI! WE'RE SMU!

Singapore Management University is a premier university in Asia and internationally recognised for our world-class research and our pioneering undergraduate pedagogy and programme. Our beautiful city campus is located in the heart of ultra-modern Singapore, with strategic linkages to business, government and the wider community. You would probably know our bustling island republic for being one of the safest cities in the world.

SMU is home to more than 13,000 students from Singapore, Asia, and all over the world. Our campus community is warm and welcoming, and international students contribute significantly to the incredible diversity and vibrancy of the University's academic and social life. You, too, can make your mark at SMU!

## SMU AT A GLANCE

**>13,000** UNDERGRADUATE AND POSTGRADUATE STUDENTS ON CAMPUS


FRESHMEN FROM **>170** HIGH SCHOOLS **>70** CITIES AROUND THE WORLD

 **>30** PROFESSORS ACROSS DIFFERENT NATIONALITIES

**11** UNDERGRADUATE DEGREE PROGRAMMES    **45+** MAJORS    **18** PROFESSIONAL MASTERS PROGRAMMES    **14** DOCTORAL PROGRAMMES

**1**  **DOWNLOAD THE OVERLY APP FOR AN EXPERIENCE**



**2**  **SCAN THE FULL PAGE WHERE YOU SPOT THIS APP ICON**

## WHY SMU SCORES A PERFECT 10



### GLOBAL EXPERIENCE FOR EVERYONE

Our 100% policy means everyone gets to go overseas and be transformed in the best possible ways!



### TWO MAJORS GUARANTEED

Not one, but two majors. Learn more, be better equipped and gain an edge.



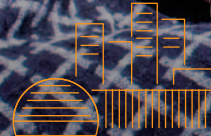
### 100% SMALL CLASS SIZES

With up to only 45 students per seminar, you will learn more, get to speak up and be heard.



### DIRECT MERITORIOUS HONOURS

for all graduates across all SMU undergraduate programmes. What's not to like?



### BUSTLING CITY CAMPUS

A city campus puts you right in the hustle and bustle of the work crowd. The vibrant atmosphere of the city campus also becomes an ideal venue for holding networking events, workshops and seminars.



### STRONGEST EMPLOYMENT OUTCOMES

Amongst Singapore government-funded universities, SMU grads are getting hired faster, securing more job offers and earning higher wages!



### WORLD-CLASS FACULTY AND TOP SCIENTISTS

They're recognised across various fields including artificial intelligence and econometrics.



### EXCEPTIONAL CAREER SUPPORT

All SMU students are assigned a personal career coach right from day one!




### MULTIPLE INTERNSHIP ADVANTAGE

The average SMU student completes 2-6 internships, both local and overseas, to better prepare them for the working world.



### VIBRANT STUDENT LIFE

With over 150 student clubs, you'll find your passion here in arts, culture, sports, special interests, community service and so much more!

 **SCAN WITH THE OVERLY APP TO VIEW MORE**

# WELCOME TO SINGAPORE!

This little red dot on the map is a cosmopolitan, global city pulsating with life and dynamism. It's a melting pot of cultures from all over the world. There's always a cultural festival, sports, lifestyle or arts event to celebrate or participate in all year round. In SMU, we're at the heart of all that's happening. It will broaden your world view beyond the campus!

## GET TO KNOW SINGAPORE

Languages: English, Mandarin, Malay, Tamil

Population: 5.9 million

Area Size: 734.3 Sq Km

International Students: Around 50,000

Academic Year: August-May

Currency: Singapore Dollars (SGD)

Calling Code: +65

Time Zone: GMT+8

## ESTIMATED LIVING EXPENSES IN SINGAPORE (MONTHLY)



ACCOMMODATION  
\$500 - \$800



UTILITIES  
\$40 - \$100



TRANSPORTATION  
\$120 - \$200



TELECOMMUNICATIONS  
\$50



STUDY MATERIALS  
\$200 - \$300  
PER TERM



PERSONAL EXPENSES  
(ENTERTAINMENT, SHOPPING)  
\$100 - \$300



FOOD  
\$300 - \$500

**TOTAL ESTIMATED EXPENSES \$1,300 (960 USD) – \$2,200 (1,625 USD)\* PER MONTH**

\*Based on the latest currency exchange rate in June 2023.

## WHY SINGAPORE MIGHT JUST BE THE BEST PLACE TO STUDY OVERSEAS



### INCREDIBLY SAFE

Ranked as the safest country in the world in Gallup's Law and Order Index 2022 and with consistently low crime rates and a reliable police force, you'll feel safe here.



### STRONG ECONOMY

Singapore topped the global ranking for the third year in a row in the latest Economic Freedom Index. It has also retained its position as the best business environment over the next five years, according to the Economist Intelligence Unit's latest business environment rankings for the second quarter of 2023.



### CONVENIENT PUBLIC TRANSPORT

We have one of the best public transport systems in Asia. According to a report by consulting firm McKinsey, 'it is accessible, efficient, convenient, sustainable and affordable'.



### WORLD-CLASS HEALTHCARE

Singapore has one of the best healthcare systems in the world. It's something that will give you peace of mind.



### WORLD'S FASTEST BROADBAND NATION AND WI-FI CONNECTIVITY

Singapore has one of the fastest fixed broadband connectivity in the world. Even the shopping malls, cafes and MRT stations will provide you with Wi-Fi connectivity!



### CLEANEST CITY IN THE WORLD

Singapore was voted the cleanest and greenest city in the world, according to a 2021 Time Out Index survey.



### FOOD PARADISE

When it comes to food and dining, Singapore wins hands down! From our world-famous hawker fare to fine dining, we have something to whet every appetite.



### THE GREAT OUTDOORS

Singapore isn't called the City in a Garden for nothing. You'll be surprised how much greenery and natural spaces there are for you to enjoy whether you prefer to hike, cycle, swim, run or walk.

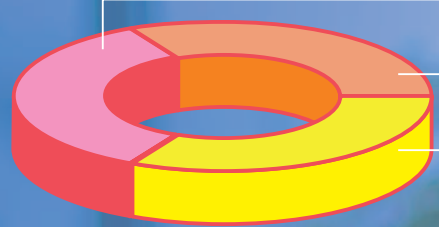


### A VIBRANT ART SCENE

With museums and art galleries aplenty, there's something for every type of art buff. Singapore attracts world-class exhibitions and art events all through the year.

## A TRULY INTEGRATIVE ACADEMIC EXPERIENCE

You will gain exposure to a wide range of interdisciplinary approaches to complement the focused training for your major(s). This will make for a 100% integrative and interdisciplinary experience!



1/3 CORE CURRICULUM\*

1/3 MAJOR

1/3 ELECTIVES / 2ND MAJOR / TRACKS

\*This is a general representation as different degree programmes will incorporate different Core Curriculum requirements and different major/core requirements.

# A WORLD-CLASS ACADEMIC EXPERIENCE

**EXPLORE YOUR INTELLECTUAL INTERESTS - GRADE-FREE!**  
You can exclude up to 2 modules (even advanced ones) from your final GPA. So feel free to try new things!

**CHOOSE LATER!**  
Take all the time you need before deciding on your 2nd major (you can also choose not to take one). You only need to declare your major(s) before the end of your 2nd year in SMU.

## SMU TAKES INDIVIDUALISED LEARNING TO THE NEXT LEVEL WITH THE LAUNCH OF ITS COLLEGE OF INTEGRATIVE STUDIES

- 1 FIRST LOCAL UNI THAT LETS YOU DESIGN YOUR OWN MAJOR!
- 2 RESERVE A SEAT IN UP TO 2 PROGRAMMES, INCLUDING THE BACHELOR OF INTEGRATIVE STUDIES
- 3 AND YOU DON'T HAVE TO CHOOSE YOUR DEGREE UNTIL THE END OF YEAR 1!

2 MAJORS

### TWO MAJORS GUARANTEED

Choose from 500+ double major combinations across the university. Contrasting majors or complementary majors? It's your choice.



### SMU CORE CURRICULUM

This innovative Core Curriculum forms the root intellectual experience that every student will undergo at SMU.



### AN INTERACTIVE SEMINAR EXPERIENCE

Debates and discussions are the cornerstone of the SMU academic experience. When you engage actively and think on your feet, you'll become a better and more effective communicator.



### DISTINGUISHED FACULTY

Be taught by professors who are at the forefront of their fields, including SMU professors ranked amongst the top 1-2% of scientists in the world across multiple disciplines including Artificial Intelligence and Econometrics.

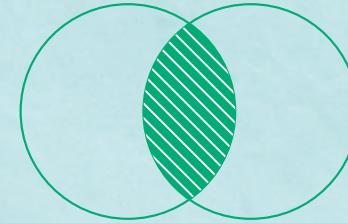
Source: A global study by Stanford University, published in 2020.



TRY OUR 'FIND YOUR MAJOR' TOOL!

WWW

# CHOOSE FROM OVER 500 DOUBLE MAJOR AND DOUBLE DEGREE COMBINATIONS



OVER 500  
DOUBLE MAJOR  
AND DOUBLE DEGREE  
COMBINATIONS



GUARANTEED  
2ND MAJOR

## SCHOOL OF ACCOUNTANCY

- Accounting
- Accounting Data and Analytics (to be taken as a 2nd major)
- Financial Forensics (to be taken as a 2nd major)

## LEE KONG CHIAN SCHOOL OF BUSINESS

- Communication Management
- Communication Management with track in Data, Design, & Communication
- Finance
- Finance with track in Finance Analytics
- Finance with track in Real Estate
- Finance with track in Wealth Management
- Finance with track in International Trading
- Finance with track in Banking
- Innovation & Entrepreneurship
- Marketing
- Marketing with track in Marketing Analytics
- Operations Management
- Operations Management with track in Operations Analytics
- Operations Management with track in Maritime Business & Operations
- Organisational Behaviour & Human Resources
- Quantitative Finance
- Strategic Management
- Digital Business (to be taken as a 2nd major)
- Sustainability (to be taken as a 2nd major)

## SCHOOL OF COMPUTING AND INFORMATION SYSTEMS

### BSC (INFORMATION SYSTEMS) DEGREE Information Systems Major with:

Single track options:

- Business Analytics
- Digitalisation & Cloud Solutions
- Financial Technology
- Smart-City Management & Technology

Dual tracks options:

- Business Analytics and Digitalisation & Cloud Solutions
- Business Analytics and Financial Technology
- Digitalisation & Cloud Solutions and Financial Technology
- Digitalisation & Cloud Solutions and Smart-City Management & Technology
- Smart-City Management & Technology and Business Analytics
- Smart-City Management & Technology and Financial Technology
- Smart-City Management & Technology

### BSC (COMPUTER SCIENCE) DEGREE IT Solution Development Major with:

Single track options:

- Artificial Intelligence
- Cybersecurity
- Cyber-Physical Systems

Dual tracks options:

- Artificial Intelligence and Cybersecurity
- Artificial Intelligence and Cyber-Physical Systems
- Cybersecurity and Cyber-Physical Systems

## BSC (COMPUTING & LAW) DEGREE

### BSC (SOFTWARE ENGINEERING) SKILLSFUTURE WORK-STUDY DEGREE

#### Second Majors

For BSc (Information Systems), BSc (Computing & Law) and BSc (Software Engineering) WSDeg students only:

- Computing Studies
- Artificial Intelligence
- Cybersecurity
- Cyber-Physical Systems

For BSc (Information Systems), BSc (Computer Science), BSc (Computing & Law) and BSc (Software Engineering) WSDeg students only:

- IT Solution Management
- Technology for Business Solutions
- Business Analytics
- Digitalisation & Cloud Solutions
- Financial Technology
- Smart-City Management and Technology

For BSc (Computer Science), BSc (Computing & Law) and BSc (Software Engineering) WSDeg students only:

- Technology for Business Solutions
- Business Analytics
- Digitalisation & Cloud Solutions
- Financial Technology
- Smart-City Management and Technology

For students from other schools within SMU

- Technology for Business

## SCHOOL OF ECONOMICS

- Economics
- Economics with track in Quantitative Economics
- Economics with track in Real Estate
- Actuarial Science (to be taken as a 2nd major)
- Actuarial Science with Industry Integration Track (to be taken as a 2nd major)
- Health Economics & Management (to be taken as a 2nd major)
- Data Science and Analytics (to be taken as a 2nd major)

## YONG PUNG HOW SCHOOL OF LAW

- Law
- Legal Studies (2nd major for non-Law students)

## SCHOOL OF SOCIAL SCIENCES

- Politics, Law and Economics (to be taken as a 1st major only)
- Political Science
- Psychology
- Sociology
- Arts and Culture Management (to be taken as a 2nd major)
- Global Asia (to be taken as a 2nd major)
- Public Policy and Public Management (to be taken as a 2nd major)
- Sustainable Societies **NEW** (to be taken as a 2nd major)

## COLLEGE OF INTEGRATIVE STUDIES **NEW**

- Deferred Declaration of Degree
- Individualised Major
- Individualised Second Major

## OUR 220+ PARTNER UNIVERSITIES INCLUDE...

### NORTH AMERICA

Boston University  
 The University of British Columbia  
 The University of North Carolina at Chapel Hill  
 University of Pennsylvania  
 University of Toronto  
 ...and MANY MORE!

### EUROPE

Copenhagen Business School  
 King's College London  
 Sciences Po, Paris  
 Trinity College Dublin  
 University of Cambridge  
 University of Oxford  
 University of Warwick  
 ...and MANY MORE!

### ASIA/OCEANIA

Chulalongkorn University  
 Fudan University  
 Kyoto University  
 Peking University  
 Seoul National University  
 The University of Melbourne  
 Tsinghua University  
 ...and MANY MORE!

# TRAVEL THE GLOBE, BROADEN YOUR WORLD VIEW

## GUARANTEED GLOBAL EXPERIENCE FOR ALL SMU STUDENTS

Over the years, SMU undergraduates have fanned out across the world on study missions, overseas exchanges, summer programmes, community service projects and overseas internships.



### GLOBAL INNOVATION IMMERSION (GII)

A summer internship for entrepreneurial students who enjoy working in a fast-paced start-up environment. Destinations include Bangkok, Beijing, Ho Chi Minh City, Jakarta, Manila, New York, San Francisco, Shanghai and more.



### OVERSEAS INTERNSHIPS

Having global work experience is imperative for your future career in today's competitive job market. Destinations include Bangalore, Bangkok, Beijing, Ho Chi Minh City, Hong Kong, Jakarta, Manila, Mumbai, Shanghai and more.



### INTERNATIONAL STUDENT EXCHANGE PROGRAMME

Get to spend a term overseas and experience university life around the world. Destinations include Bangkok, Beijing, Berlin, Boston, Casablanca, Dublin, Hangzhou, Lima, London, Melbourne, Mexico City, Paris, Seoul, Tokyo, Toronto, Warsaw and more.



### SMU-X OVERSEAS

SMU-XO projects give students real-world experience working with partners abroad and/or managing regional and global projects in the workplace. Destinations include Bangkok, Beijing, Berlin, Chengdu, Ho Chi Minh City, Jakarta, Manila, New York, Seoul, Shenzhen, Tainan, Taipei, Vientiane, Yogyakarta and more.



### OVERSEAS COMMUNITY SERVICE PROJECTS

As part of global experience, students are encouraged to embark on overseas projects to understand first-hand the challenges of communities around the world. Destinations include Chiang Mai, Ho Chi Minh City, Jakarta, Kolkata, Manila, Medan, Phnom Penh, Pokhara and more.



### STUDY MISSIONS

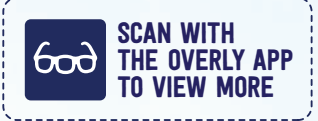
Courses are designed to give students current insights into industries related to their field of study through a 13-week seminar-style pedagogy, meetings and visits with companies outside of Singapore. Destinations include Barcelona, Beijing, Kyoto, Lahore, London, Munich, New York, San Francisco, Tokyo, Venice and more.

**8** MINUTE WALK TO MAIN CAMPUS



There's nothing like living and learning in the middle of the city, and nowhere better than our newly-renovated student residences at Prinsep Street. Here you will live in spacious, airy apartments filled with natural light and designed on a zero-energy concept. Choose from a single room or a double room. You will have a large living space to share with your suitemates, including a kitchen and a chic living area or hang out in the midst of beautiful green spaces.

**LIVE ON CAMPUS,**



**MAKE FRIENDS FROM**

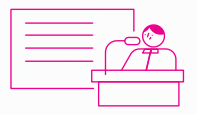
**ALL OVER THE WORLD**



**YOU CAN LOOK FORWARD TO:**



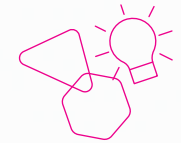
Curated Core Curriculum



Conversations with distinguished guests from around the world at the PSR Fellow Tea Sessions



Mentorship by SMU Professors



Fun social events, skill development workshops, volunteer opportunities, and more!

**"PSR REPRESENTS A DIVERSE, GROWING COMMUNITY WITH AN OPPORTUNITY TO LEARN, LIVE AND FORM CONNECTIONS, ALL IN THE CENTRE OF ONE OF THE MOST VIBRANT CITIES IN THE WORLD. GETTING A CHANCE TO REGULARLY INTERACT WITH PEOPLE OF DIFFERENT COMMUNITIES AND CULTURES, ALONG WITH ENDLESS OPPORTUNITIES TO REFLECT AND FLOURISH IN A COMMUNITY OF LIKE-MINDED STUDENTS, IS MY BIGGEST TAKEAWAY FROM LIVING AT PSR."**

KISHEN SUWATH JUDE PEIRIS, FINAL YEAR STUDENT  
LEE KONG CHIAN SCHOOL OF BUSINESS



# NO ONE PREPARES YOU AS RIGOROUSLY FOR YOUR CAREER AS SMU

## CAREER PROSPECTS

Many of our graduates work for reputable, international companies, starting in graduate level positions. Below is a selection of SMU's international graduate destinations:

Alibaba Group  
Allianz  
Amazon Web Services  
Apple Inc.  
BHP Group  
Citigroup  
China Construction Bank  
Credit Suisse

Deloitte  
Google  
Grab  
Goldman Sachs  
Huawei Technologies Co Ltd  
Johnson & Johnson Pte Ltd  
JPMorgan Chase  
LG Electronics

L'Oréal  
Maersk  
Morgan Stanley  
Microsoft  
Procter & Gamble  
Shell  
Siemens Mobility  
Singapore Airlines

Sony  
The Coca-Cola Company  
Thomson Reuters  
UBS  
Unilever Asia Private Limited  
United Nations Development Programme  
...AND MANY MORE!

## CAREER PREP SMU-STYLE



### INTERNSHIPS

Get the chance to try out different industries to gauge your interest and aptitude before you graduate. All SMU students complete at least one internship before graduation.



### CAREER SKILLS WORKSHOPS

You will undergo workshops that are developed based on key employment trends, career coaching techniques and the changing needs of students and recruiters.



### PERSONAL CAREER COACH

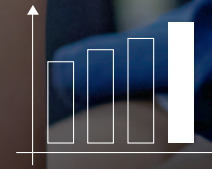
Receive specific one-on-one career advice from your own dedicated career coach, who will guide you in polishing up your resume and securing that job interview.

RIGHT FROM DAY ONE!



### INDUSTRY TALKS

Deepen your understanding of various subjects with regular lectures and talks by industry leaders and practitioners.



**\$4,896**

Mean Gross Monthly (Starting) Salary of SMU graduates - Highest amongst universities surveyed!



**95.1%**

of SMU graduates secured employment within 6 months of their final exams!



**>1 in 2**

SMU graduates received 2 to 6 job offers.




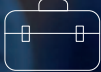









**7 in 10**

SMU graduates secured employment EVEN BEFORE graduation.



# FLY HIGH WITH SMU - MEET OUR INTERNATIONAL ALUMNI AND CURRENT STUDENTS

## WHO'S IN OUR FRESHMAN COMMUNITY?

-  Athletes
-  Entrepreneurs
-  App Developers
-  Musicians
-  Artists
-  Performers
-  Dancers
-  Social Activists
-  Debaters
-  Student Leaders
-  Many students with a heart for service



"I chose to come to SMU because I was fascinated by its interdisciplinary curriculum and the seminar-style classes, which encourage interactive learning among students. The vibrant student life and diverse international student community affirmed my decision to come to SMU. The highlight of my student life in SMU thus far is joining the SMU Golf Club, which gave me the chance to continue playing golf in university and make lifelong friends along the way while balancing my studies as SMU strongly supports a sporting culture."

Hsu Thitsar Lwin, Year 3 Student  
School of Computing and Information Systems  
Formerly from NO.(2), BASIC EDUCATION  
HIGH SCHOOL, MINGALARDON



"I did a lot of research when I was deciding which university to study in Singapore. I am an extroverted person, so I prefer a more engaging and interactive teaching style wherein students can express their opinions freely in class and discuss questions with professors on the spot. The two-way discussion would help develop our public speaking skills and communication skills, which are critical skills for my future career. I'm very glad that I chose SMU back then as the University has a very strong and comprehensive career preparation programme (including counselling, resume/interview support, job placement and access to job fairs), which has helped me secure my dream internship and multiple job offers even before graduation!"

Ma Xiaoqi, Final Year Student  
School of Accountancy  
Formerly from YINHAI ACADEMY



"I chose to study in Singapore because of its reputation as a global education hub and the beautiful country itself. SMU was my first choice because of its lovely campus located right at the heart of the city centre, vibrant student life with a multitude of student clubs to choose from, as well as the holistic and interdisciplinary curriculum which trains students to be well rounded. I love how SMU focuses a lot on soft skills, such as communication, problem-solving, critical thinking, teamwork, and leadership, which are very important skills to have in the workplace. I also appreciate that SMU's strong industry connections provide numerous opportunities for internships and networking, enhancing its graduates' employability."

Uguudei Batkhuu, Year 2 Student  
Lee Kong Chian School of Business  
Formerly from ORCHLON  
INTERNATIONAL SCHOOL



"As I now live so far away from home, it is important for me to be part of an open, caring and joyful community, where people are genuinely happy for each other's success, and it is easy to make friends. I think I have found this community in SMU. Furthermore, SMU's efforts towards mental health for all students also stood out for me, and as studying abroad without my family can be pretty tough at times, I am very glad to know that the university is placing a lot of emphasis on my mental well-being."

Nina May Homburg, Year 2 Student  
School of Social Sciences  
Formerly from WILHELM-RAABE GYMNASIUM



"During my time at SMU, I had the privilege of participating in two transformative summer exchange programmes at renowned institutions, Harvard University and the London School of Economics, exposing me to diverse cultures, customs and perspectives. Living and studying in foreign countries fostered personal growth, self-reliance and resilience, boosting my confidence and problem-solving skills. Overall, these international experiences have had a profound impact on my personal and professional development (especially when I'm running my own business now), providing me with a global perspective, cultural competence and the ability to thrive in diverse environments."

Ishaan Kejriwal  
CEO & Owner, Piyanshu Chemicals Private Limited  
Graduate, Lee Kong Chian School of Business



"SMU graduates have an edge in the global workforce due to experiential learning, practical skills, and a global mindset. The SMU curriculum combines business knowledge with critical thinking, communication, and cultural diversity, preparing graduates for success in a competitive professional landscape."

Daniel Minardi  
Director, Business Partnership, Shopee  
Graduate, School of Accountancy



"I genuinely believe that the best skills I have picked up at SMU are learning how to communicate with various people and how to present myself and my ideas to others. SMU gave me a lot of opportunities to study overseas and learn about new people, cultures, languages, and traditions. And I used every single possible chance to get exposure overseas. With all the global experiences, I'm confident in convincing, negotiating, and interacting with overseas partners. I'm proud of myself for taking things into my hands and never giving up."

Tamilla Massanchi  
Study Abroad Specialist,  
InterPress International House  
Graduate, Lee Kong Chian School of Business



"SMU has enabled me to get out of my comfort zone and push my limits in both personal and professional development. The ability to contribute profusely through classroom participation, project work and extracurricular activities in an open, diverse and modern environment propelled me to stand out as a valuable team member even when I was just starting my career. That created a strong momentum for me to achieve and contribute even more later in my career."

Nguyen Hoang Trung  
Total Rewards Analytics & Insights Lead, Cargill  
Graduate, School of Economics

# READY FOR TAKE-OFF? APPLY NOW!



SCAN TO  
LAUNCH YOUR  
SMU JOURNEY!

## TUITION FEES

Our tuition fees are highly subsidised by the Singapore Government in the form of a Tuition Grant administered by the Ministry of Education. This makes studying at SMU affordable.

Eligible Singapore Citizens, Permanent Residents and international students enrolled in full-time undergraduate courses at the autonomous universities may receive it. Permanent Residents and international students will need to apply for a Tuition Grant as part of their online admission application form. If you are offered a Tuition Grant together with your university place, you will also need to accept the Tuition Grant offer when you accept your place. Successful applicants are required to work for a Singapore entity for three years upon graduation.

Those who are not eligible or choose not to apply for the grant will pay the non-subsidised fees. By paying the non-subsidised fees throughout the course of study, they do not need to serve the 3-year work obligation.

Degree	Annual Subsidised Fees Payable by Singapore Citizens	Annual Subsidised Fees Payable by Singapore Permanent Residents	Annual Subsidised Fees Payable by International Students	Annual Non-Subsidised Fees	
<b>ANNUAL TUITION FEES FOR AY2023/24 ENTERING FRESHMEN*</b>  (Regular Term 1 and Term 2)	Bachelor of Accountancy				
	Bachelor of Business Management				
	Bachelor of Integrative Studies (Individualised Major)				
	Bachelor of Science (Economics)	\$11,500	\$16,050	\$24,850	\$45,600
	Bachelor of Science (Information Systems)				
	Bachelor of Science (Computing & Law)				
	Bachelor of Science (Computer Science)				
	Bachelor of Science (Software Engineering)				
Bachelor of Social Science					
Bachelor of Laws	\$12,700	\$17,750	\$27,400	\$49,950	

\*The subsidised fees for Singapore Citizens and Singapore Permanent Residents shown are without GST which is separately subsidised by the Singapore Government.

The subsidised fees for International Students and non-subsidised fees are inclusive of GST.

For Singapore citizens who are paying non-subsidised fees, the 1% GST increment will be subsidised by SMU for 2023 (The prevailing GST rate is 8% with effect from 1st January 2023 and from 1st January 2024, the GST rate will increase to 9%).

All fees above are in Singapore Dollars (SGD).



## SUPPORT FOR INTERNATIONAL STUDENTS

- STUDENT SERVICES HUB** serves as a one-stop resource for all kinds of student services. Here, you will be able to complete your university transactions (from student card replacement and application of undergraduate concession cards to locker rental), obtain information on SMU and its policies, or just about any other student-related issue.
- MRS WONG KWOK LEONG STUDENT WELLNESS CENTRE** puts students in touch with professional counsellors offering counselling and other support services and programmes that promote intellectual and emotional wellbeing. It is a safe space for students who need help or just a listening ear from the rigours of academic life or the challenges of adapting to a new environment.
- SMU INTERNATIONAL CONNECTIONS (SMU ICON)** helps students integrate on campus and celebrates cultural diversity among local and international students. Under the buddy programme, you will be paired with an SMU senior who will help you familiarise yourself around campus and Singapore, as well as answer any queries you may have about settling into SMU.

## SCHOLARSHIPS AVAILABLE FOR INTERNATIONAL STUDENTS

SMU offers a range of scholarships and financial awards for international students. These range from full tuition coverage scholarships to partial awards that can offset the cost of living, such as books, laptop purchase and so on.



FIND YOUR  
DREAM SCHOLARSHIP!



## ADMISSION REQUIREMENTS

- 12 years of formal education
- Good national and international qualifications
- Applicants applying with international qualifications (except IB Diploma) are required to submit one of the following: SAT, ACT, IELTS, TOEFL, C1 Advanced or PTE Academic

# HOW TO APPLY

**APPLICATIONS OPEN IN OCTOBER AND CLOSE IN MARCH OF THE FOLLOWING YEAR. YOU CAN APPLY ONLINE VIA [ADMISSIONS.SMU.EDU.SG](https://admissions.smu.edu.sg)**



## ACADEMIC CALENDAR

There is only one freshman intake a year, starting in August. SMU's undergraduate programmes are conducted on campus on a full-time basis.

### TERM 1

Aug to Nov (15 weeks)

### TERM 2

Jan to Apr (15 weeks)

## SINGAPORE MANAGEMENT UNIVERSITY OFFICE OF ADMISSIONS AND FINANCIAL ASSISTANCE

Administration Building Level 3, 81 Victoria Street, Singapore 188065  
Contact: +65 6828 0980 | Email: [admissions@smu.edu.sg](mailto:admissions@smu.edu.sg)

[f](#) [@](#) [d](#) @smuadmissions

Live Chat with us at [admissions.smu.edu.sg](https://admissions.smu.edu.sg) every weekday!



**START YOUR  
SMU JOURNEY  
TODAY!**

Information is accurate as of July 2023.