

# Postgraduate Professional Programmes

Nurturing Leaders to  
Shape a Better World



SINGAPORE MANAGEMENT  
UNIVERSITY

POSTGRADUATE



Glen Browne  
Executive MBA, Class of 2022  
Deputy Regional President,  
APAC/Division President for  
Consumer Lines, Chubb

Karthigeyan Muthupandian  
MSc in Management, Class of 2021  
Director,  
Superstar Traders

Zhong Meng Na  
MSc in Economics, Class of 2020  
Operations Executive  
Bright Point Capital (Singapore)

Master  
Your  
Future



## MESSAGE FROM ASSOCIATE PROVOST (POSTGRADUATE PROFESSIONAL EDUCATION)



“A fast-rising Asia brings tremendous opportunities. It heralds an increasingly complex business environment that demands new knowledge, skills and expertise. Breakthrough ideas, leadership and an entrepreneurial spirit are necessary.

Master your future as one of a new generation of leaders, entrepreneurs and professionals, with an SMU postgraduate professional programme tailored for the Asian century. Take this unique opportunity to immerse yourself in a rich learning environment that meets the changing needs of students, industry and society.

I welcome you to explore our SMU Masters programmes and discover how we can help you learn new things, deepen knowledge and broaden your perspectives.”

**Associate Professor Themis Suwardy**  
Associate Provost (Postgraduate Professional Education)

### School of Accountancy

**1<sup>ST</sup>**  
**WORLDWIDE**

CITATION RANKINGS, ARCHIVAL RESEARCH (ALL TOPICS) AND ARCHIVAL RESEARCH (FINANCIAL ACCOUNTING) IN THE BRIGHAM YOUNG UNIVERSITY (BYU) ACCOUNTING RESEARCH RANKINGS 2022

### School of Economics

**1<sup>ST</sup>**  
**IN ASIA** FOR ECONOMETRICS RESEARCH

TILBURG UNIVERSITY ECONOMICS SCHOOLS RESEARCH RANKINGS. BASED ON CONTRIBUTIONS FOR THE PERIOD 2016-2020

### Lee Kong Chian School Of Business

**2<sup>ND</sup>**  
**IN ASIA** TRIPLE ACCREDITED BUSINESS SCHOOL IN SINGAPORE (AACSB, AMBA, EQUIS)

UNIVERSITY OF TEXAS DALLAS RESEARCH 2021 RANKINGS. BASED ON CONTRIBUTIONS FOR THE PERIOD 2015-2019



# SMU - IN THE HEART OF SINGAPORE, IN THE HEART OF ASIA

In the dynamic, cosmopolitan hub that is Singapore, you will find a vibrant city-state that pulses with the diversity of both East and West. Situated at the crossroads of the world, Singapore is home to multinational companies and thousands of small and medium-sized enterprises flourishing in a smart city renowned for its business excellence and connectivity. With its strong infrastructure, political stability, and respect for intellectual property rights, this City in a Garden offers you unique opportunities to develop as a global citizen.

Tapping into the energy of the city is a university with a difference – the Singapore Management University. Our eight schools: School of Accountancy, Lee Kong Chian School of Business, School of Computing and Information Systems, School of Economics, College of Graduate Research Studies, College of Integrative Studies, Yong Pung How School of Law, and School of Social Sciences, form the country's only city university campus, perfectly sited to foster strategic links with businesses and the community.

SMU generates leading-edge research with global impact and produces broad-based, creative and entrepreneurial leaders for a knowledge-based economy. Discover a multi-faceted lifestyle right here at SMU, in the heart of Singapore.

## TOP REASONS TO STUDY IN SINGAPORE

- 1** Singapore is a leading global business and financial hub. It is the Asian HQ for many of the world's most renowned MNCs. SMU's location in the heart of the city provides superb access to numerous industry connections, career and internship opportunities.
- 2** Situated at the crossroads between East and West, Singapore offers a multi-cultural experience within a unique City in a Garden. Providing an excellent living environment with world-class infrastructure, it is also a regional and global air hub with links to over 130 cities.
- 3** SMU is known for its academic excellence and iconic city campus location. The robust health and hygiene measures implemented will safeguard our students and ensure your peace of mind.
- 4** Singapore is a safe and secure oasis in which to live and study. It is well-known for its political stability, low crime rate and for being a world model in the management of Covid-19.



**"The journey with SMU was phenomenal and has enabled me to fulfil my personal goal and achieve career growth. The knowledge gleaned from the programme has improved the conversations I have with clients. In addition to broadening my thinking horizon, I also got to learn from my younger classmates who were adept at picking up the course content and the experience has enriched me as a person with their willingness to share."**

Angela Koh  
Master of Science in Wealth Management, Class of 2019  
Executive Director, UBD



**"The Master of IT in Business (MITB) has provided me with the necessary skill set of analytical tools and techniques as I embark on my career in data science. The professors not only cover key concepts but also challenge us to think out of the box with our projects to prepare us for the industry. The SMU Career Services team has also helped me tremendously during my job search and equipped me with the essential communication and negotiation skills to navigate through interviews and analyse my potential career path through individual coaching sessions. Looking back at how much I have grown, I know that I have definitely made the right choice to join MITB as it has opened many doors for my career. I believe that Data Science is not only a hot career path but it will be an essential skill in every industry moving forward."**

Joanna Quek  
Business Integrity Analyst, Meta  
Master of IT in Business (MITB) – Analytics Track, Class of 2019



# THE SMU MASTERS ADVANTAGE



## GLOBAL RECOGNITION

SMU is globally recognised as one of the best specialised universities in Asia and the world. Its research rankings, programme rankings, accreditations and professional recognition are testaments to its achievements and standing.



## INTERACTIVE PEDAGOGY

SMU's interactive, seminar-style pedagogy brings you stimulating, multi-disciplinary learning under the mentorship of the thought leaders and subject experts who make up our faculty. You will hone your analytical skills, teamwork and communication skills.



## INNOVATIVE CURRICULUM

Stay relevant with courses that combine cutting-edge research and up-to-date knowledge with best business practices. SMU's Postgraduate Professional Development Course and award-winning Asian case studies help you approach topics from different practical perspectives for greater insights.



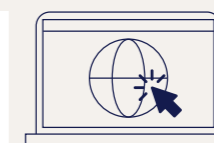
## NETWORKING AND CAREER OPPORTUNITIES

SMU has a diverse student population from many different countries, bringing equally diverse personal and professional experience into your network. Take advantage of comprehensive guidance from our dedicated career services to aid your career transition or advancement.



## CITY CAMPUS

SMU is nestled within the arts and heritage precinct, right next to the Central Business District, with unrivalled connectivity for public transport and multiple amenities around campus. Discover how life beyond the classroom is as enriching as within.



For a full listing of SMU Masters programmes, visit [masters.smu.edu.sg/programmes](https://masters.smu.edu.sg/programmes)

# OUR DIVERSE STUDENT POPULATION COMES FROM MORE THAN 42 COUNTRIES ACROSS THE GLOBE

Our city campus pulsates with the vibrancy of our diverse and international student body. With students coming from a diversity of professions, experiences and nationalities, these networks provide you with important insights into your future career choices and opportunities that may spinoff into pathways up the corporate ladder.



- |  |   |   |   |
|--|---|---|---|
| <span style="color: green;">■</span> Australia           | <span style="color: brown;">■</span> Fiji               | <span style="color: orange;">■</span> Malaysia          | <span style="color: blue;">■</span> St Vincent and the Grenadines |
| <span style="color: purple;">■</span> Austria            | <span style="color: black;">■</span> Germany            | <span style="color: lightgreen;">■</span> Mauritania    | <span style="color: olive;">■</span> Sweden                       |
| <span style="color: red;">■</span> Azerbaijan            | <span style="color: darkpurple;">■</span> Hong Kong SAR | <span style="color: blue;">■</span> Myanmar             | <span style="color: red;">■</span> Switzerland                    |
| <span style="color: brown;">■</span> Belarus             | <span style="color: purple;">■</span> India             | <span style="color: purple;">■</span> Netherlands       | <span style="color: blue;">■</span> Thailand                      |
| <span style="color: olive;">■</span> Belgium             | <span style="color: orange;">■</span> Indonesia         | <span style="color: green;">■</span> Pakistan           | <span style="color: pink;">■</span> Tunisia                       |
| <span style="color: tan;">■</span> Brazil                | <span style="color: lightgreen;">■</span> Iran          | <span style="color: blue;">■</span> Philippines         | <span style="color: brown;">■</span> Qatar                        |
| <span style="color: green;">■</span> Cambodia            | <span style="color: cyan;">■</span> Italy               | <span style="color: brown;">■</span> Russian Federation | <span style="color: teal;">■</span> United Arab Emirates          |
| <span style="color: red;">■</span> Canada                | <span style="color: pink;">■</span> Japan               | <span style="color: orange;">■</span> Singapore         | <span style="color: blue;">■</span> United Kingdom                |
| <span style="color: yellow;">■</span> China              | <span style="color: darkpurple;">■</span> Kazakhstan    | <span style="color: teal;">■</span> South Korea         | <span style="color: orange;">■</span> United States of America    |
| <span style="color: purple;">■</span> Dominican Republic | <span style="color: brown;">■</span> Lebanon            | <span style="color: teal;">■</span> Spain               | <span style="color: grey;">■</span> Uzbekistan                    |
| <span style="color: blue;">■</span> Egypt                | <span style="color: green;">■</span> Macao SAR          | <span style="color: red;">■</span> Sri Lanka            | <span style="color: blue;">■</span> Vietnam                       |
|  | <span style="color: lightgreen;">■</span> Maldives      |   |   |

# OUR GRADUATE EMPLOYMENT OUTCOMES

## COUNTRIES OUR GRADUATES ARE EMPLOYED IN

- |           |           |          |             |             |                |
|-----------|-----------|----------|-------------|-------------|----------------|
| Australia | France    | Italy    | Malta       | Singapore   | Thailand       |
| Canada    | India     | Japan    | Netherlands | South Korea | United Kingdom |
| China     | Indonesia | Malaysia | Philippines | Switzerland |                |

## INDUSTRIES OUR GRADUATES ARE EMPLOYED IN

AUDIT / ACCOUNTING	COMMODITIES	CONSULTING	CONSUMER GOODS	EDUCATION	ENERGY
FINANCIAL SERVICES	FOOD & BEVERAGE	GOVERNMENT	HEALTHCARE	HOSPITALITY	MANUFACTURING
MEDIA / ADVERTISING / ENTERTAINMENT	CHEMICALS	LIFESTYLE	WHOLESALE IMPORT AND EXPORT	PRIVATE EQUITY / VENTURE	CAPITAL / INCUBATOR
REAL ESTATE	RECRUITMENT	RETAIL	TECHNOLOGY	TRANSPORTATION & LOGISTICS	



**“One of the takeaways I had was the networking opportunities and building of relationships. I was lucky to work on a project with people who hold senior roles in their companies and there is so much to learn from them. And being a mid-career individual, I too was also able to provide guidance to fresh graduates.”**

Goh Shun Min  
Data Analyst, Enterprise Data Strategy & Analytics at UOB  
Master of Science in Accounting (MSA), Class of 2020  
UOB-MSA Scholarship Recipient



**“When my son finished his undergraduate studies at SMU’s Lee Kong Chian School of Business, his transformation was palpable - the confidence, content of what he says and the way he frames discussion points. Thus, I told myself that studying in SMU for my Master of Laws (LLM) may not be a bad idea at all. I browsed the modules offered which I thought were forward-looking and future-relevant. I believe I made the right choice in SMU with its excellent professors, modern facilities and convenient location. I particularly liked the comparative and holistic approach, as the approach taken in each module enabled us to discuss relevant legal issues from local to regional to global perspectives. I will forever be grateful to SMU.”**

Archilo Arcayan Matugas  
Vice President and Head of Corporate Governance, SMART Communications, Inc.  
Master of Laws (LLM), Class of 2019

# OUR POSTGRADUATE PROFESSIONAL PROGRAMMES

## EMBA

EXECUTIVE MASTER OF BUSINESS ADMINISTRATION

22<sup>ND</sup> GLOBALLY

[masters.smu.edu.sg/emba](https://masters.smu.edu.sg/emba)

9 weeks over 12 months - modular (starts in August)

For the global senior leader keen on business innovation and growth, the SMU EMBA programme prepares you for the challenge of leading organisations in rapidly-growing Asian markets. Spend a week each at our renowned partner institutions on top of your collaborative learning under our distinguished faculty here at Singapore's city campus.

## MIM

MASTER OF SCIENCE IN MANAGEMENT

5<sup>TH</sup> IN ASIA

[masters.smu.edu.sg/mim](https://masters.smu.edu.sg/mim)

18 months - full-time (starts in January & August) & blended (starts in July)

Specifically designed to prepare you for the widest range of careers in business, this rigorous programme equips you with a comprehensive understanding of management across a variety of practical disciplines. Adaptability, creativity and critical thinking with a global-Asian focus will give you an edge in the business world.

## MQF

MASTER OF SCIENCE IN QUANTITATIVE FINANCE

[masters.smu.edu.sg/mqf](https://masters.smu.edu.sg/mqf)

12 months - full-time (starts in August) / 24 months - part-time (starts in August)

Tame the risk while staying on top of the game – everything you need to know about pricing and hedging, risk analytics and management, and quantitative trading and investment is covered in this course. Choose either the Singapore-based track or international track based at Bayes Business School in London, England.

## MEI

MASTER OF SCIENCE IN ENTREPRENEURSHIP & INNOVATION

[masters.smu.edu.sg/mei](https://masters.smu.edu.sg/mei)

12 months - full-time (starts in August)

The region's burgeoning new business creation and innovation sector is reason to explore this cross-disciplined entrepreneurial programme. With regular engagement by business visionaries and an overseas study stint at the reputable Babson College in the United States, you will be primed to lead Asia's next generation of innovators.

## MBA

MASTER OF BUSINESS ADMINISTRATION

10<sup>TH</sup> IN ASIA

[masters.smu.edu.sg/mba](https://masters.smu.edu.sg/mba)

10-15 months - full-time (starts in January & August) / 15-18 months - part-time (starts in July & August)

For the professional looking to accelerate your career progression or effect a career change, the SMU MBA allows you to draw on the know-how of our professors and industry experts to develop critical business skills. This experiential learning programme brings you regional case studies, international exchanges, internships with world-class companies and projects with leading organisations.

## MAF

MASTER OF SCIENCE IN APPLIED FINANCE

6<sup>TH</sup> Among Asian Business Schools

40<sup>TH</sup> GLOBALLY

[masters.smu.edu.sg/maf](https://masters.smu.edu.sg/maf)

12 months - full-time (starts in August) / 18 months - part-time (starts in August)

The MAF provides you with in-depth specialist knowledge and strategic perspectives to navigate challenging financial situations. Relevant and comprehensive, it also prepares you for the Chartered Financial Analyst and Chartered Alternative Investment Analyst certification.

## MWM

MASTER OF SCIENCE IN WEALTH MANAGEMENT

1<sup>ST</sup> IN ASIA

3<sup>RD</sup> GLOBALLY

[masters.smu.edu.sg/mwm](https://masters.smu.edu.sg/mwm)

12 months - modular (starts in August)

Be a specialist in global wealth management through this first-of- its-kind programme, ranked 1st in Asia and 3rd globally by Financial Times. Both aspiring and seasoned wealth managers will benefit from the interactive curriculum with a sharp Asian focus, while gaining valuable experience from overseas study trips to Switzerland and the United States.

## MST

MASTER OF SUSTAINABILITY

[masters.smu.edu.sg/mst](https://masters.smu.edu.sg/mst)

11 months - full-time (starts in August) / 23 months - part-time (starts in August)

Energise your career for the green economy's present and future. Dive into a distinctive, inter-disciplinary curriculum blending SMU's expertise with inspiration from the UN's Sustainable Development Goals and Singapore's visionary Green Plan 2030. Select your path from 3 tracks: 'Sustainable Resource Management,' 'Urban Systems,' 'Environment and Development,' or embrace a holistic sustainability perspective. Your journey into the green future begins here.

## MPA

MASTER OF PROFESSIONAL ACCOUNTING

[masters.smu.edu.sg/mpa](https://masters.smu.edu.sg/mpa)

12-18 months - full-time (starts in August) / 24 months - part-time (starts in August)

Cut an exciting new career path in the accountancy sector, whether in professional services or corporate accounting, across diverse industries. Not only does the SMU MPA offer an accelerated route towards qualification for CPA or CA status, it is also ideal for those needing accounting knowledge in their expanded roles. Unlock global opportunities in an evolving corporate world.

## MSE

MASTER OF SCIENCE IN ECONOMICS

[masters.smu.edu.sg/mse](https://masters.smu.edu.sg/mse)

10-24 months - full-time (starts in January & August) / 24-30 months - part-time (starts in January & August)

The MSE equips you with rigorous economic thinking and data analytic skills. Empowered with in-depth understanding of economic implications of human motives, incentives, policy and institutions, you will gain an edge in the world of economics. Customise your programme through our 2 specialised tracks in Applied Economics, and Econometrics & Quantitative Economics.

## JD

JURIS DOCTOR

[masters.smu.edu.sg/jd](https://masters.smu.edu.sg/jd)

36 months - full-time (starts in August)

The highly competitive JD programme prepares graduates from other disciplines or from civil law jurisdictions for the practice of law in Singapore. The small-group setting and rigorous curriculum are sculpted to provide you with a sound theoretical foundation in the law, while also equipping you with the analytical, verbal and oral skills that are the hallmark of any legal professional.

## MITB

MASTER OF IT IN BUSINESS

2<sup>ND</sup> IN ASIA

[masters.smu.edu.sg/mitb](https://masters.smu.edu.sg/mitb)

12 months - full-time (starts in January & August) / 24 months - part-time (starts in January & August)

Technology is key when it comes to staying competitive in the financial industry. The MITB empowers you with knowledge of data, processes and management strategies to stay ahead of the curve. Choose from 4 unique specialisation tracks: Analytics, Financial Technology & Analytics, Artificial Intelligence and Digital Transformation.

## MSA

MASTER OF SCIENCE IN ACCOUNTING (DATA & ANALYTICS)

[masters.smu.edu.sg/msa](https://masters.smu.edu.sg/msa)

12-18 months - full-time (starts in August) / 24 months - part-time (starts in August)

Technological disruption in the accounting and finance sectors has created a swell of big data that cries out for critical thinking skills and analytical expertise. Learn to uncover patterns and insights for a valuable competitive advantage through the specialised data and analytics track. Be future ready with the MSA, the first-of-its-kind in Asia.

## MSFE

MASTER OF SCIENCE IN FINANCIAL ECONOMICS

[masters.smu.edu.sg/msfe](https://masters.smu.edu.sg/msfe)

10-18 months - full-time (starts in January & August)

Leverage the latest modelling, forecasting and surveillance methods available in economics and econometrics to analyse complex financial problems. The MSFE combines the two central strengths of SMU – econometrics and finance – in one multi-disciplinary programme that will help you navigate challenges, as well as opportunities, in the modern financial industry.

## LLM

MASTER OF LAWS

[masters.smu.edu.sg/llm](https://masters.smu.edu.sg/llm)

12 months - full-time (starts in August) / 24 months - part-time (starts in August)

With the rise of Asian economies comes the demand for transnational legal services. Be ready for opportunities across the continent with this programme that explores a broad range of issues from cross-border deals to transnational disputes. Customise your focus through our 4 specialised tracks in Cross-Border Business and Finance Law in Asia, Judicial Studies, Dual LLM in Commercial Law, and Law & Technology.

### THE FOLLOWING PROGRAMMES ARE AVAILABLE VIA PARTNER INSTITUTIONS:

Global Master of Finance Dual-Degree (GMF)

Master of Science in CFO Leadership (MCFO)



**SMU Postgraduate  
Professional Programmes**

Singapore Management University  
SMU Postgraduate Professional Programmes  
81 Victoria Street, Singapore 188065

(65) 6828 0100  
email: [masters@smu.edu.sg](mailto:masters@smu.edu.sg)

   **SMUMASTERS**



 微信公众号

[masters.smu.edu.sg](http://masters.smu.edu.sg)